



MOLYGREEN MOTOR OIL



MOLYGREEN Automotive Lubricants is a brand of CAP Style which is a wholesaler of oils and gears for vehicles. MOLYGREEN series was established to satisfy the customers' requirements and needs.

There are three characteristics.

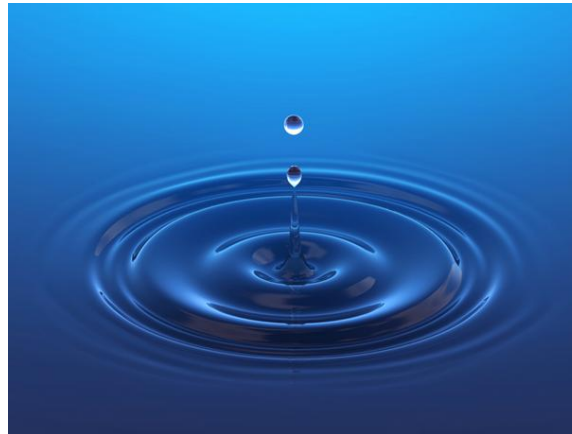
Tender for Human Being - economic efficiency and quietness of vehicles

Good for Vehicles - protective performance and endurance ability of engines

Friendly for Environment - environment adaptability.



"MOLYGREEN" is CAP Style's coined brand name by combining Japanese term "MOLY" that means the forests with "GREEN" from the color image of the beautiful nature.

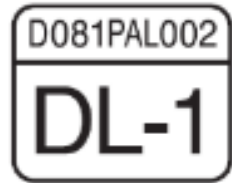


- MOLYGREEN has been developed mostly for Japanese Vehicles. European cars requirements standards also are met.
- MOLYGREEN conforms to Japanese quality management standards
- MOLYGREEN is sold in Japanese market

Concept - MOLYGREEN has been developed for Japanese vehicles-



The Japanese Vehicle manufacturers should conform to standards such as API, ILSAC and JASO.



JASO M 355 適合品
本DL-1性能の品質保証者
バルスター株式会社

Of course, “MOLYGREEN “ have passed these standards.



Concept - MOLYGREEN is made in Japan -

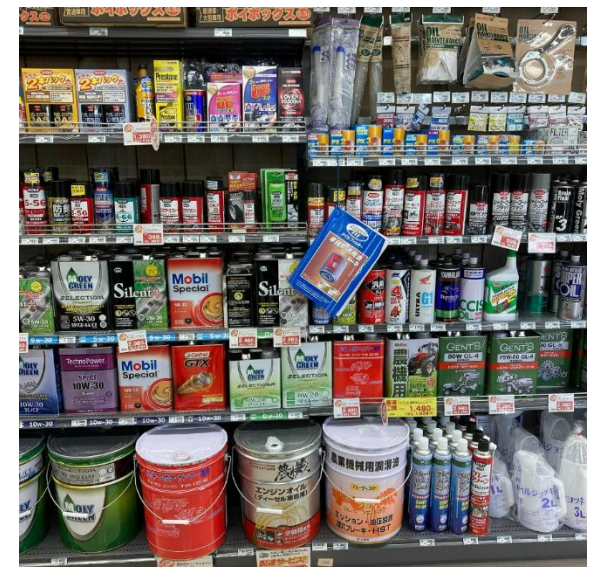


MOLYGREEN conforms to Japanese quality management standards



専用倉庫での管理 ▶ 出荷

Concept - MOLYGREEN is sold in Japanese market -



Line up



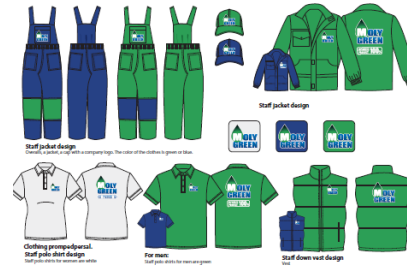
SERIES				
PERFECT Racing spec SYNTHETIC PAO Group IV Ester Group V				
	PERFECT	PERFECT	PERFECT	PERFECT
PROTECT BLACK EARTH プレミアムグレード SYNTHETIC VHVI Group III + PAO				
	PREMIUM 0W-20 SP/GF-6A	PREMIUM 5W-30 SP/GF-6A	PREMIUM 0W-30 SP/GF-6A	
SELECTION SERIES スタンダードグレード SYNTHETIC VHVI Group III				
	SELECTION 0W-20 SP/GF-6A	SELECTION 5W-30 SP/GF-6A	SELECTION 5W-40 SN/CF	SELECTION 10W-40 SN/CF
SELECTION SERIES スタンダードグレード SYNTHETIC BLEND				
		SELECTION 10W-30 SM/CF		
PRO-S PRO-S シリーズ PRO-S				
	PRO-S 0W-20 SP/GF-6	PRO-S 5W-30 SP/GF-6		
EURO PROTECT FULL SYNTHETIC VHVI Group III C3 SP/GF-6A				
	EURO PROTECT 5W-30 C3 SP/GF-6A			

JUST FIT YOUR CAR SERIES			
HYBRID 0W-20	DL-1 5W-30		
OTHER LUBRICANT AND FLUID			
ATF ECO	CVTF	BF-4	BF-3
Gear Oil	Suspension Fluid		
FLUSHING AND ADDITIVE			
SILENT COAT	ENGINE FLUSH		

Advantages of Becoming Our Distributor



Unique Products and Support
We'll supply catalogs, novelty items, and more.

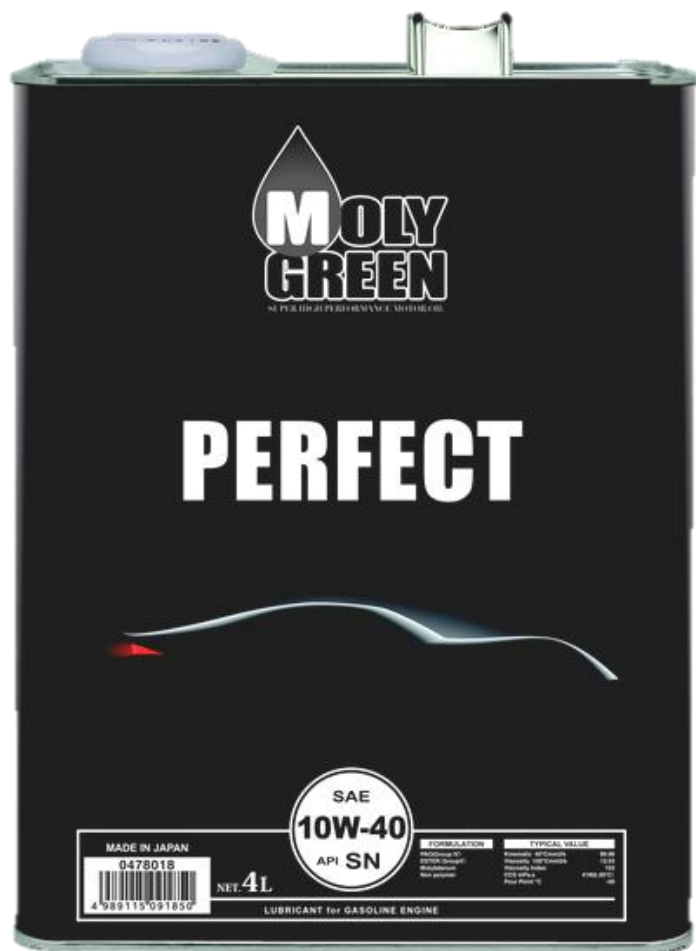


Marketing Assistance
Get involved in exhibitions and company seminars alongside MOLYGREEN's team.



Cashback Rewards
Earn cash back on your next order based on your sales volume.





Perfect engine oil pursuing only the best performance

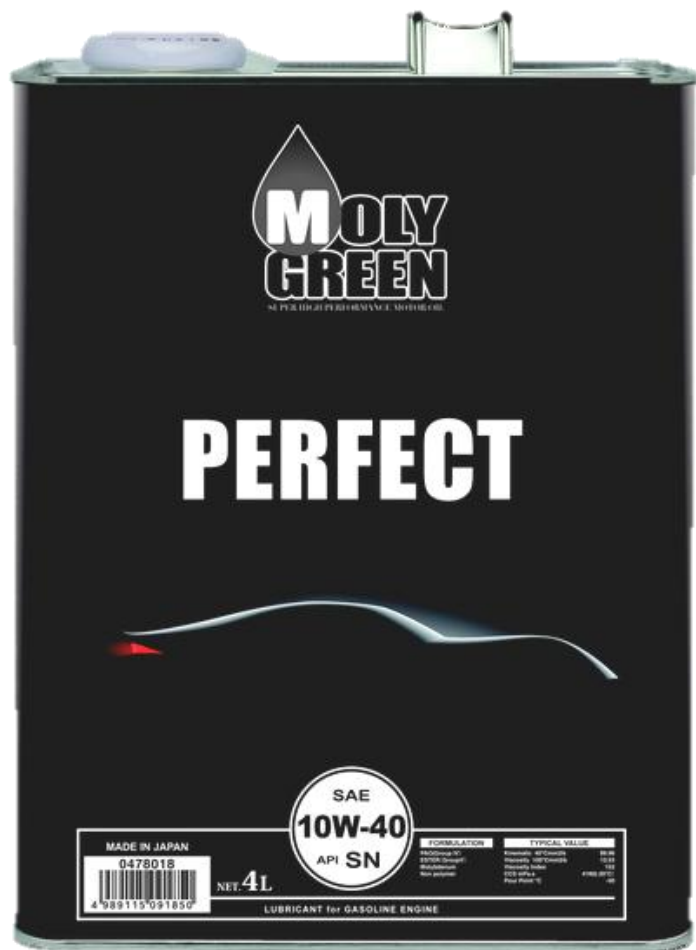
Base oil of PERFECT
PAO (Group IV) and ESTER (Group V) only

PAO (poly-alpha-olefin) is excellent low-temperature fluidity and high viscosity index.

ESTER is excellent protection force such as heat resistance, low friction resistance and adsorption properties.

Molybdenum

In order to further performance of excellent base oil, MOLYGREEN Perfect compound the molybdenum at high concentrations. Molybdenum as a friction modifier is a very high friction-reducing effect additive. And it has excellent oxidation stability, wear resistance and extreme pressure.



● API SN performance For GASOLINE ENGINE

● 1L / 4L

Base oil	Additives	Viscosity	VII
PAO /ESTER	Friction modifier /Molybdenum /and other	25W-60	Non Polymer
		10W-60	VI Improver(Polymer)
		20W-50	Non Polymer
		15W-50	VI Improver(Polymer)
		5W-50	VI Improver(Polymer)
		15W-40	Non Polymer
		10W-40	Non Polymer
		5W-40	VI Improver(Polymer)
		0W-40	VI Improver(Polymer)
		5W-30	Non Polymer
		0W-30	VI Improver(Polymer)
		5W-20	Non Polymer
		0W-20	Non Polymer

● Some products are non-polymer type without VI Imp.

Premium



Premium 5W-30 SP/GF-6A/CF

API:SP/CF performance

ILSAC:GF-6A

FULL SYNTHETIC (VHVI Group III)

With PAO

For GASOLINE/DIESEL

1L / 4L / 20L / 200L

- Fuel efficiency and economy.
- It is also recommended to large displacement vehicle.
- New generation Multi-grade oil developed under the concepts of fuel efficiency and lower-aging property.
- For all season.
- Provides long oil-drain interval, long-lasting high efficiency and performance.

Premium



Premium 0W-20 SP/GF-6A

API:SP

ILSAC:GF-6A

FULL SYNTHETIC (VHVI Group III)

With PAO

For GASOLINE

1L / 4L / 20L / 200L

● Multi-grade ecology oil developed by the concept of fuel saving benefit and low oil-aging property to maximize eco-cars performance.

● It is also recommended to Hybrid Car. (But only for the vehicle recommended to use 0W-20 viscosity engine oil)

● For all season.

Premium



Premium 0W-30 SP/GF-6A

API:SP

ILSAC:GF-6A

FULL SYNTHETIC (VHVI Group III)

With PAO

For GASOLINE

1L / 4L / 20L / 200L

- Reduces resistance in engine and lubricated parts, contributing to fuel economy.
- Recommended for eco-friendly cars, hybrid cars, and the latest sports cars.
- Recommended also for high mileage eco-friendly and hybrid cars.

JUST FIT YOUR CAR



Hybrid 0W-20 SP

API:SP performance
SYNTHETIC (VHVI Group III)
With PAO/ESTER
For GASOLINE
1L / 4L / 20L / 200L

- Protect engine from metal frictions and minimize oil deterioration.
- Correspond to Hybrid-car and Idling-stop repeat engine start and stop.
- “Molybdenum” blended. Molybdenum as a friction modifier is a very high friction-reducing effect additive.

JUST FIT YOUR CAR



Clean Diesel 5W-30 DL-1

Grade up, New formulation

JASO:DL-1

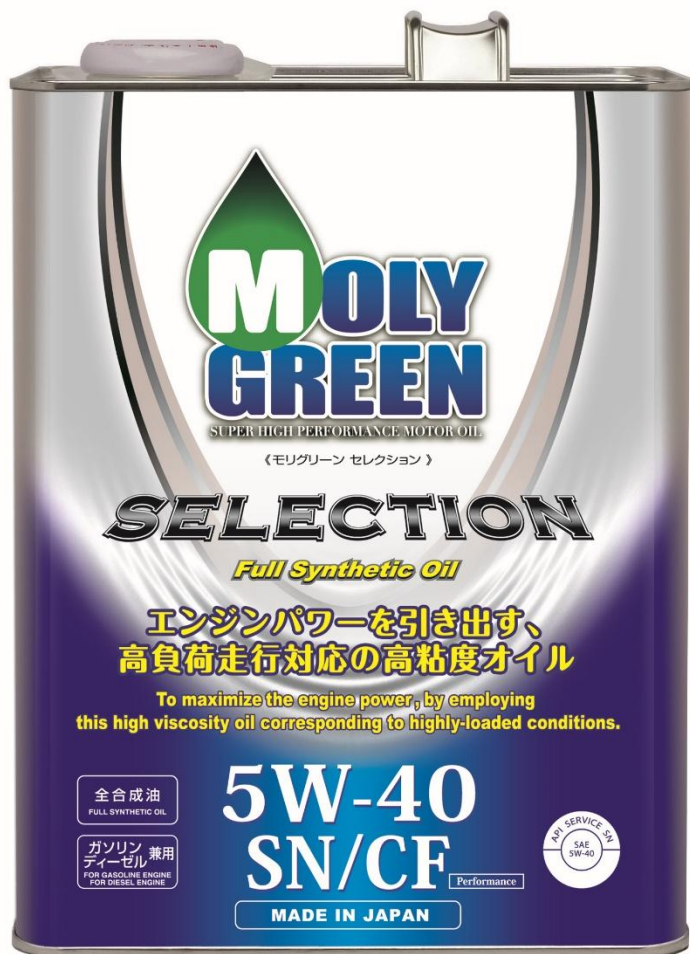
SYNTHETIC

For DIESEL

1L / 4L / 20L / 200L

Acquires JASO DL-1 standard, and applicable to DL-1 cars equipped with DPF (Diesel Particulate Filter). Also provides the performance of CF-4 and applicable to passenger cars requiring this standard. For DPF equipped light diesel vehicles.

● Maximize the performance of Japanese Clean Diesel.



SELECTION 5W-40 SN/CF

API:SN CF performance

SYNTHETIC (VHVI Group III)

For GASOLINE/DIESEL

1L / 3L / 4L / 20L / 200L

- Outstanding heat resistance and engine protection performance.
- Excellent reduction properties for oil aging even under high-speed and highly-loaded driving conditions.
- Great contribution to mechanical noise reduction owing to its superior viscosity characteristics at high temperature.

SELECTION



SELECTION 5W-30 SP/GF-6A/CF

API:SP/CF performance

ILSAC:GF-6A

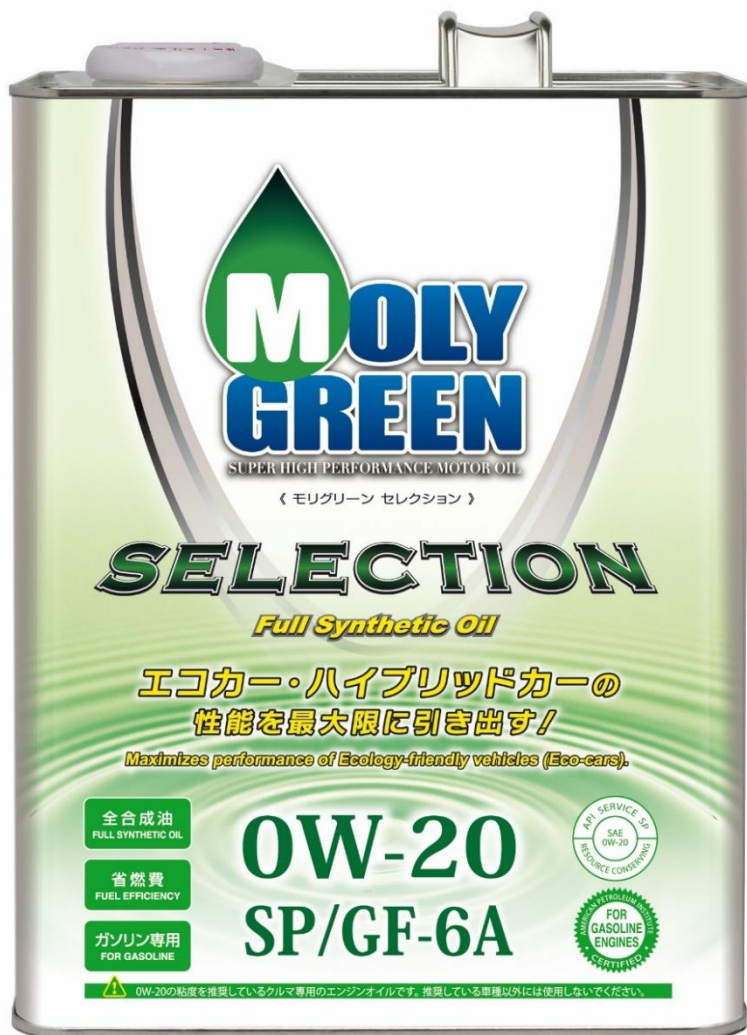
FULL SYNTHETIC (VHVI Group III)

For GASOLINE/DIESEL

1L / 3L / 4L / 20L / 200L

- New generation Multi-grade oil developed under the concepts of fuel efficiency and lower-degradation property.
- Achieves high fuel efficiency by using the newest additive technologies and synthetic base oil aiming at high performance for small to large engine vehicles
- Provides long oil-lasting high efficiency and performance.

SELECTION



SELECTION 0W-20 SP/GF-6A

API:SP

ILSAC:GF-6A

FULL SYNTHETIC (VHVI Group III)

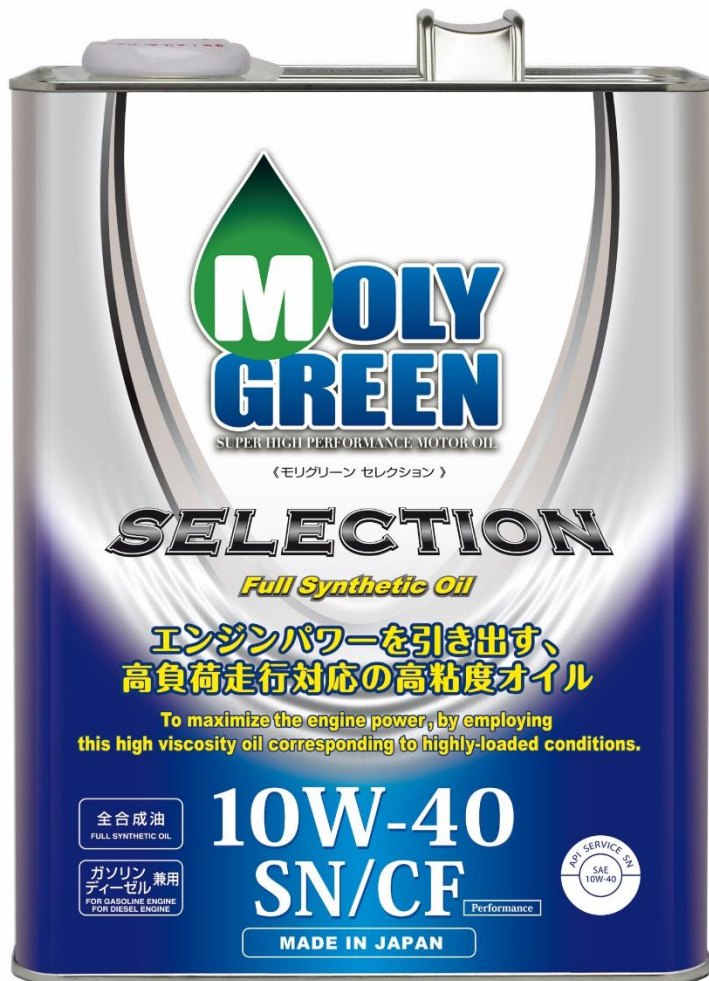
For GASOLINE

1L / 3L / 4L / 20L / 200L

● Multi-grade ecology oil developed by the concept of fuel saving benefit and low oil degradation property to maximize eco-cars performance.

● Extra-low viscosity reduces friction of lubricated engine parts, and high economy efficiency along with achieving high protective performance by using newest additives technologies.

SELECTION



SELECTION 10W-40 SN/CF

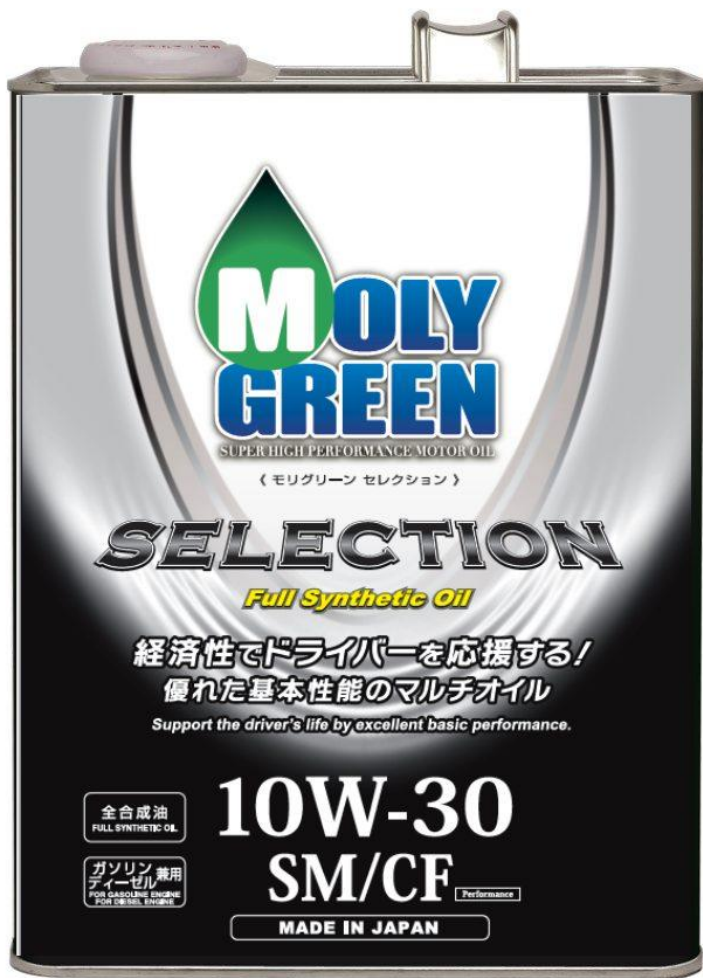
API:SN/CF

SYNTHETIC (VHVI Group III)

For GASOLINE/DIESEL

1L / 3L / 4L / 20L / 200L

- New generation Multi-grade oil developed under the concepts of fuel efficiency and lower-degradation property.
- Great contribution to mechanical noise reduction owing to its superior viscosity characteristics at high temperature.



SELECTION 10W-30 SM/CF

API:SM/CF

SEMI SYNTHETIC

For GASOLINE/DIESEL

1L / 3L / 4L / 20L / 200L

- Excellent reduction properties for oil aging even under high-speed and highly-loaded driving conditions.
- Extra-low viscosity reduces friction of lubricated engine parts, and high economy efficiency along with achieving high protective performance by using newest additives technologies.

PRO-S



PRO-S 0W-20 SP/GF-6

API:SP/GF-6A

FULL SYNTHETIC (VHVI Group III)

For GASOLINE

1L / 4L / 20L / 200L

● Developed by formulation latest additive technologies in carefully selected base oils, it meets SP/GF-6 required performance of LSPI and timing chain wear suppression at highest levels. With high fuel-efficiency performance, it realizes excellent clean dispersion, wear resistance, and high oxidation stability.

● High quality while reasonable efficiency.

PRO-S



PRO-S 5W-30 SP/GF-6

API:SP/GF-6A

FULL SYNTHETIC (VHVI Group III)

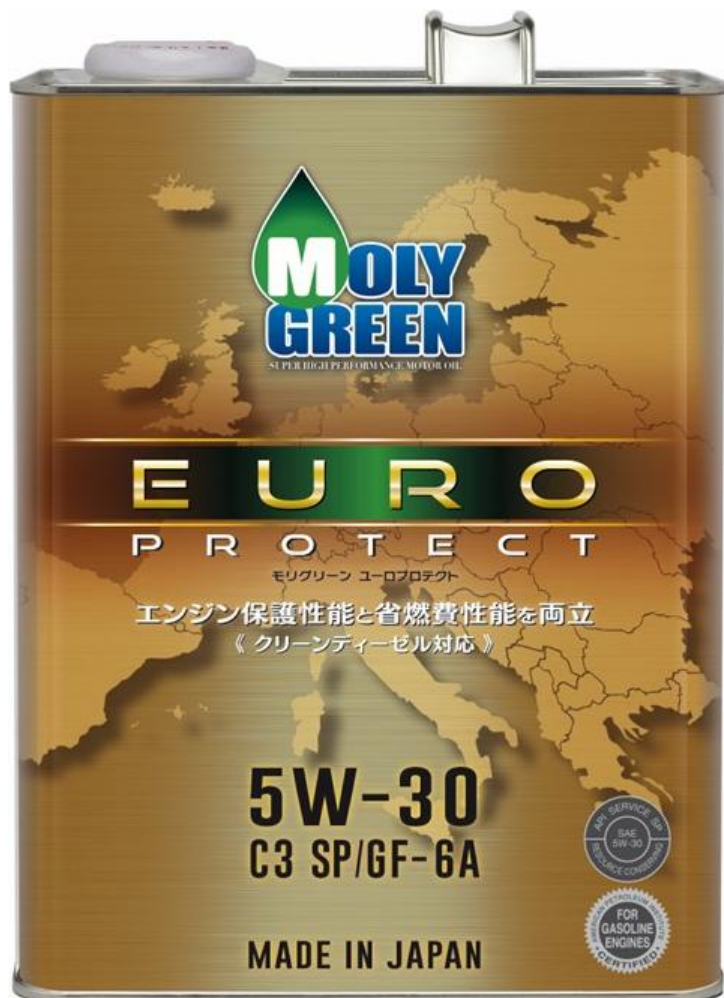
For GASOLINE

1L / 4L / 20L / 200L

●Combining excellent evaporation characteristics and low-temperature liquidity, with flow point as low as -50°C, it can be used in severe low-temperature environments. (Results of our test evaluation)

●Developed by formulation latest additive technologies in carefully selected base oils, it meets SP/GF-6 required performance of LSPI and timing chain wear suppression at highest levels.

EURO
P R O T E C T



EURO PROTECT C3 SP/GF-6A

API:SP

ILSAC:GF-6A

FULL SYNTHETIC (VHVI Group III)

For GASOLINE

1L / 4L / 20L / 200L

●Enhanced durability of engine oil with ultra-high performance base oil.

Furthermore, by performing special refining, thermal stability, low-temperature viscosity, and evaporation characteristics that are important for engine oil performance are improved to a high level.



Heavy Duty



HEAVY DUTY

For commercial use

10W-30 DH-2/CF-4 SYNTHETIC

15W-40 DH-2/CF-4 SYNTHETIC

20L / 200L

- Acquires JASO DH-2 standard, and applicable to DH-2 engine equipped with DPF (Diesel Particulate Filter).
- Also provides the performance of CF-4 and applicable to diesel engine requiring this standard.

SPECIAL FLUIDS & OTHER PRODUCTS



ATF

Automatic transmission fluid

Full Synthetic Oil

Compatible with HV-AT vehicles

1L / 4L / 20L / 200L

Automatic transmission fluid. Preserving stable torque characteristics in low and high temperature by using synthetic oil along with excellent fuel efficiency.

Recommend for Japanese vehicles equipped with ATF.

SPECIAL FLUIDS & OTHER PRODUCTS



CVT

Continuously variable transmission fluid

Full Synthetic Oil

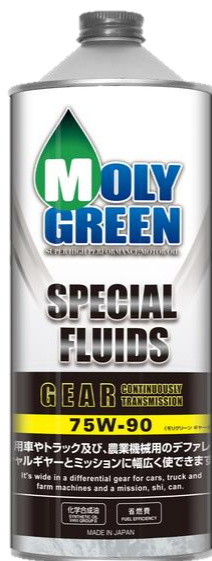
1L / 4L / 20L / 200L

Excellent fluidity by using synthetic blended oil enabling smooth drive shift from start-up to top-speed driving.

Recommend for Japanese vehicles equipped with CVT.

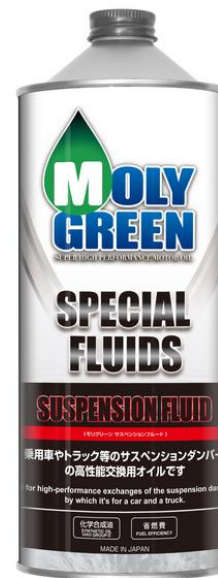
SPECIAL FLUIDS & OTHER PRODUCTS

GEAR TRANSMISSION DIFFERENTIAL OIL



75W-90 GL-5 1L	75W-90 GL-4 1L
75W-90 GL-5 LSD 1L	
80W-90 GL-5 1L	80W-90 GL-4 1L
75W-85 GL-5 1L	75W-85 GL-5 LSD 1L

SUSPENSION FLUID 1L



SPECIAL FLUIDS & OTHER PRODUCTS



DOT-4 BRAKE FLUID 0.5L

High quality brake fluid type 4. Stable braking performance owing to the high boiling point. Wet boiling point over 155°C.

DOT-3 BRAKE FLUID 0.5L

High quality brake fluid type 3 with high anti-rust property. Wet boiling point over 140°C.

	BF-4	BF-3
Boiling point °C (Dry)	256	365
ph(50vol%)	8.2	9.5
Density (15°Cg/cm3)	1.05	1.03
Flash point (COC)°C	142	132



ENGINE FLUSH 300ml

Capacity: 300ml

Ingredients: Lubricating base oil, detergent-dispersant

4-cycle gasoline-diesel engine internal cleaner

Remove accumulated sludge on the inside of the engine to keep the inside of the engine clean.

Recommended use: 4-cycle gasoline-diesel engine internal cleaner

SPECIAL FLUIDS & OTHER PRODUCTS

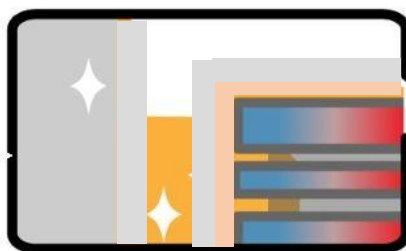


SILENTCOAT

ADDITIVE FOR GASOLINE ENGINE OIL

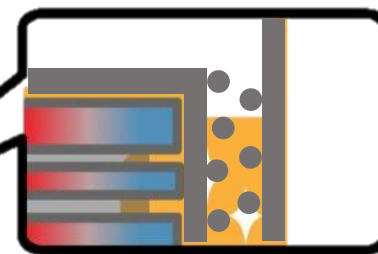
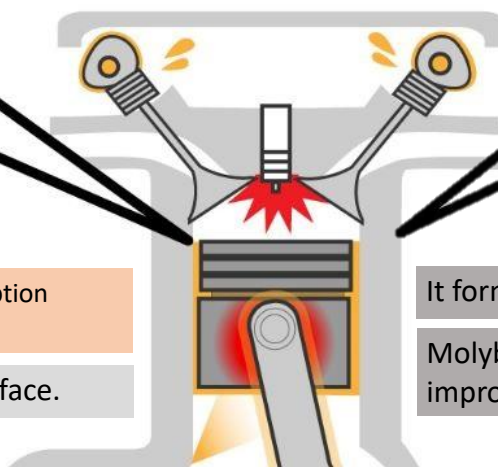
Molybdenum reduces friction and noise.

Form a reaction film on the metal surface and reduce friction to improve the lubrication performance, and also reduce the engine noise, protect the inside of engine from abrasion by the effect of molybdenum.



Strong oil film formation on metal surface due to adsorption effect of ester.

It forms and protects Teflon coating on metal surface.



It forms a molybdenum coating on the metal surface.

Molybdenum disulfide is purified by chemical reaction, improving quietness and sealability.